



Annual CCTV report 2013/4



Community Safety Team
May 2014.

Contents	page
Message from the Leader of the Council	3
Message from the Community Safety Partnership Chairman	4
Message from Lancashire Constabulary	5
Executive Summary	6
Introduction	7
Background	8
Support for CCTV Nationally	8
Purpose of the West Lancashire CCTV system	9
The prevention of disorder or crime	10
List of Priorities	10
West Lancashire Strategic Assessment summary – the evidence	11
Base for CCTV	
Police and Crime plan 2013-2018	11
Surveillance camera code of practice – review of cameras	12
Highlights from the operation of the system 2013/2014	13
Monitoring details	13
Future plans	13
Appendix 1	15
Appendix 2	21

Message from the Leader of the Council



As Leader of the Council and a former member of the Local Strategic Partnership (LSP) Executive, I am pleased to endorse this document. CCTV is something that the Council, with support from the LSP has invested in heavily over the last few years. Our monitoring suite is superb and the envy of many other Councils. Our original cameras have been replaced and we have supplemented them with new cameras in locations that have not benefitted from CCTV before.

Reducing crime and increasing public confidence, at a time when the resources of public bodies are stretched was the aim of the different projects we have supported. I am pleased to say that I believe we have achieved our aim and both residents and visitors will benefit from the works for years to come.

West Lancashire is a safe place to live and work and the Council's CCTV system will help to ensure that it stays this way.

Councillor David Westley

Message from Community Safety Partnership Chair



CCTV is an important tool in relation to reducing crime which is the overriding aim of the Community Safety Partnership (CSP). The CSP works with other partner agencies to reduce crime and improve the lives of the residents of West Lancashire and thus CCTV greatly assists us in our role.

We regularly publicise the good work of the CCTV staff in assisting the Police in relation to criminal acts. In general, I think that the public of West Lancashire are hugely supportive of CCTV and I am regularly asked why there can't be more cameras.

I am pleased to support this first annual report and know that it will be extremely helpful in generating support for CCTV and provide useful information about our system, which we are rightly proud of.

David Tilleray
Assistant Director Community Services
Chairman of the West Lancashire Community Safety Partnership

Message from Police



Lancashire Constabulary fully support the use of CCTV and it can assist us in providing key evidence. At a local level I am extremely impressed with the WLBC scheme which continues to go from strength to strength. My officers regularly visit the suite and look at the footage.

The report from Enigma shows how often the footage has proved useful to us and we have a good working relationship with the operators. Footage from the suite has assisted in relation to public order issues, drunk drivers, burglaries etc.

The operators also perform a key task in relation to preventing crimes and perform a vital link between the streets of West Lancashire and ourselves.

Geographical Inspector for West Lancashire
Christina Shorrock

Executive Summary

This document has been produced to provide details of the CCTV system in operation in West Lancashire. It also assists in demonstrating compliance with the Home Office's "Surveillance Camera Code of Practice" (the Code).

West Lancashire BC currently operates 95 CCTV cameras which are a mix of Public Open Space and internal cameras. These are monitored in Ormskirk.

This document reviews the camera locations and also highlights some of the good work CCTV assists with.

Introduction

West Lancashire Borough Council (The Council) has operated public open space CCTV cameras for over a decade. The original scheme in Ormskirk has been added to and there are currently 95 cameras operational across the Borough.

The 95 cameras are grouped in the following categories

- Ormskirk Town Centre
- Burscough Industrial Estate
- Burscough Village
- Skelmersdale
- Rural cameras (including Aughton, Parbold, Hesketh Bank, Tarleton, Banks, Rufford, Scarisbrick and Halsall), and
- Internal Council cameras

The cameras are permanently monitored 365 days a year and the operatives are in close contact with the Police at all times.

Recently the Home Office produced a document entitled “Surveillance Camera Code of Practice” (the Code). The Code was developed to address concerns over the potential for abuse or misuse of surveillance and this report assists in demonstrating compliance with this document. The Code can be viewed via :-

www.gov.uk/government/uploads/system/uploads/attachment_data/file/204775/Surveillance_Camera_Code_of_Practice_WEB.pdf

The principal partners in this CCTV scheme are West Lancashire Borough Council, the Council's CCTV Monitoring Contractor and Lancashire Constabulary.

Background

Section 17 of the Crime and Disorder Act 1998 places a duty on local authorities to do all they reasonably can to prevent;

- a. crime and disorder in their areas (including anti-social and other behaviour adversely affecting the local environment),
- b. the misuse of drugs, alcohol or other substances, and
- c. reoffending in their areas.

This will lead to improvement in people's quality of life as a result. To deliver against these requirements, government funding was made available during the 1990s and early 2000s and the Council utilised this to install its CCTV schemes. The Council has recently invested significantly in the scheme to upgrade the monitoring, transmission and camera technology to ensure the scheme remains effective and is compliant with the Code.

Management responsibility for the monitoring, operation and technical maintenance of the CCTV scheme is undertaken by the Council's Community Safety Section. The system is owned and maintained by West Lancashire Borough Council and a contracted service provider monitors the images and operates the Control Room.

The system is monitored 24 hours each day, 7 days per week. Either one or two members of staff, depending on operational requirements, undertake the monitoring. The scheme is operated in compliance with the internal West Lancashire CCTV Code of Practice, which has been agreed with the Police and the contracted service providers and has been prepared as guidance for Council staff and the operators of the system.

This internal Code of Practice also reflects the requirements of the Data Protection Act 2000 and associated regulations and is refreshed annually.

Support for CCTV Nationally

A national survey conducted in 2010 by the CCTV User Group Ltd found that:

- 90% of survey respondents support the use of Public Area CCTV by Local Authorities and Public Bodies
- 82% believe CCTV saves money by reducing Police and Court time.
- 80% of respondents believe that clearly visible CCTV managed by Local Authorities and Public Bodies does not infringe on their privacy rights.
- 76% consider there is the right amount or too few Public Area CCTV cameras currently operating
- 71% believe that CCTV in public areas makes them feel safer and reduces crime.
- 70% are against any removal of CCTV cameras by public bodies to

- meet Government budget cuts.
- 63% believe that Crime and Disorder would increase if CCTV was removed in their area.

Purpose of the West Lancashire CCTV System

The Code details that the use of a surveillance camera system must always be for a specified purpose which is in pursuit of a legitimate aim and necessary to meet an identified pressing need.

It states that such a legitimate aim and pressing need might include national security, public safety, the economic well-being of the country, the prevention of disorder or crime, the protection of health or morals, or the protection of the rights and freedoms of others.

The West Lancashire Borough Council scheme is operated in relation to the prevention of disorder or crime. Additionally it may be used in relation to public safety.

The CCTV scheme is operated within applicable law/guidance and only for the purposes identified above. The scheme will be operated with due regard to the privacy of the individual.

The scheme will not be used, for example, for traffic management or minor enforcement issues.

The prevention of disorder or crime

In order to meet the Home Office mission “To reduce Crime” members of the West Lancashire Community Safety Partnership (CSP) are required to devise, develop and deliver in partnership the refreshed annual Community Safety Partnership Plan for 2014 / 2015 for West Lancashire. The Partnership Plan is the delivery mechanism to reduce the threat and harm from identified local and national priorities.

The Community Safety Partnership Plan is supported by a Strategic Assessment Document which is reviewed annually. The annual review assists with evidencing existing local priorities and identifying emerging threats.

The Strategic Assessment (SA) provides an accurate long-term picture of issues and threats facing West Lancashire. The purpose of the document is to set out what key threats need to be prioritised and included within the Community Safety Partnership Plan. Research and analysis has helped draw out key conclusions and inform recommendations to aid strategic decision making for the CSP in developing the partnership plan.

List of Priorities

The priorities are not listed in any particular order. They are all equally important and have informed the production of the Partnership Plan and assist in evidencing the pressing need for the continued investment and use of CCTV to deter and prevent crime and disorder.

The local West Lancashire community safety strategic priorities for 2014/15 are as follows: -

- Child Sexual Exploitation
- Violent Crime Including Domestic Abuse
- Anti Social Behaviour
- Cross Border Crime and Organised Crime Groups
- Reducing Reoffending

A key ‘cross cutting theme’ interwoven throughout the five priorities is the impact that the misuse of **alcohol** and **drugs** have on both perpetrators and victims of crime. As such, it was

felt that it wasn't necessary to have substance misuse as a priority, but that it would be sufficiently addressed by initiatives implemented to combat the priorities.

West Lancashire Strategic Assessment Summary - the evidence base for CCTV

The priorities developed through this process provide an evidential base for both the continued use of CCTV cameras in key locations such as Ormskirk Town Centre and the wider use elsewhere. CCTV assists in managing issues associated with a number of the key priorities including violent crime and anti-social behaviour as well as the continued threat of acquisitive crime. Other locations covered by the West Lancashire CCTV scheme include public open space areas in Skelmersdale where there is a continuing and pressing need to manage issues associated with anti-social behaviour and violent crime.

Due to the geographical location of West Lancashire a recurring strategic priority is the threat of Cross Border Crime and Organised Crime Groups. To mitigate the risk of high impact acquisitive crime (HIAC) which includes vehicle crime and domestic burglaries, West Lancashire Borough Council has expanded its coverage in consultation with key partners including the Police and Parish Councils in some key rural locations which are targeted by Organised Crime Groups from outside of West Lancashire.

The strategic priorities are significantly relevant to the operation of the WLBC CCTV scheme. Whilst numerous cameras are located in town or village centres to deter and prevent crime and disorder, there are other cameras in more remote areas with a focus on the theme of Cross Border Crime and the significant and continued threat this presents to West Lancashire.

The operation of these cameras could assist in the identification of vehicles or persons visiting the Borough to commit crime. These cameras have been located on road networks that can be used as access/exit routes for the Borough. The Police have been supportive of CCTV in the more rural areas to assist with cross border crime and as a tool to assist reduce crime, as their own resources are reducing.

The Council's CCTV scheme may also be used in relation to public safety. This situation could arise in the event of a major disturbance or a major event. There is provision within the Council's own internal CCTV Code of Practice for a Police Inspector to utilise the monitoring suite, if necessary.

Police and Crime Plan 2013 – 2018

In developing the Partnership Plan the Community Safety Partnership will also seek to work closely with the Office of the Police and Crime Commissioner for Lancashire. The priorities

contained within the West Lancashire Partnership Plan are closely aligned to the aims of the Police and Crime Commissioner for Lancashire.

Through our established thematic group structures we will help support delivery of the aims and priorities of the Police and Crime Plan 2013-18

The Police and Crime Commissioner aims to: -

- **REASSURE** our communities – improve trust and confidence in policing.
- **REDUCE** crime
- **REDUCE** re-offending
- **WORK TOGETHER** with partners to deliver better services & ensure that resources are used effectively.

The Police and Crime Plan 2013-18 also highlights the top police and crime priorities which include: -

- Defend Frontline Policing
- Champion the Rights of the Victim
- Protect Vulnerable People
- Promote Targeted Initiatives to Contribute to Tackling Crime and Re-Offending

Surveillance Camera Code of Practice - Review of Cameras.

As previously stated the Code requires schemes to be used for a specific purpose which is in pursuit of a legitimate aim and necessary to meet an identified pressing need. In addition, the use must take account of the effect on individuals and their privacy.

The software which shows and stores the images seen by the cameras allows parts of locations to be pixelated (i.e. blurred) if there are concerns about privacy. The Original scheme of cameras had 5 locations where privacy has been raised as an issue and have windows etc which are shown as blurred to protect the privacy of the individual. When nearby residents were advised of the locations of the additional new (phase 2) cameras, several of them raised queries in relation to privacy and attention has been paid to these locations and again the images are blurred. All the CCTV operatives are Security Industry trained and fully aware of privacy issues.

The Code also details that a scheme has to be managed by an individual and that this individual can be contacted in relation to complaints or queries about the system, including privacy issues. The Council's Environmental Protection and Community Safety Manager fulfils this role and this is publicised on the Council's website. The contact details are as follows

Andrew Hill
Phone 01695 585243
Email a.hill@westlancs.gov.uk

Appendix 1 is the summary of the first review that has been undertaken, which takes account of these issues. This was conducted in March 2014 by the Council's Community Safety team and was audited by the Council's Internal Audit team as part of a review of the Council's CCTV scheme.

The table lists all the locations where the cameras are located and the new cameras are listed as phase 2. In order to identify where these additional cameras should be located an exercise was undertaken to gather the opinions of Lancashire Constabulary, the CSP analyst, Community Safety staff, the CCTV operatives, the Local Strategic Partnership and Council Members. The final locations were then confirmed by Members following a Cabinet report in July 2012.

Many of the original locations are located on Council car parks and the presence of the cameras was instrumental in helping the Council achieve "Secure by Design" status. These cameras assist in relation to vehicle crime and are not used for parking or traffic enforcement

It can be seen that all the locations are currently deemed to be appropriate. Additionally, following the review it is not currently thought that there are any additional privacy issues, however, as stated if any are raised they will be dealt with appropriately.

Highlights from the operation of the System 2013/2014.

Appendix 2 is a report provided by our monitoring contractor which details the use of the system and the incidents referred to the police for the year 2013/4. The key highlights are as follows:-

- Officers from Lancashire Constabulary reviewed footage from the cameras on 379 occasions and took away evidential footage in relation to 234 crimes.
- The operators referred incidents to the police on 384 occasions. Of these, 146 referrals resulted in arrests being made and there were 187 actual arrests. In addition 13 fixed penalty notices were issued. A further 102 people were spoken to and in the majority of these cases, more serious incidents were prevented
- 67% (or 256) of these incidents were initially identified by the operators themselves through their close observation of images.
- The operators assisted with 468 "events" relating to security deliveries and missing persons.

Monitoring details

The images from the Council's CCTV cameras are monitored in a specifically designed monitoring suite in Ormskirk. They are monitored under a contract from the Council by Enigma Security Solutions Ltd.

Monitoring takes place 24 hours every day with at least one operative present at all times.

The images from all the cameras are being permanently recorded and these recordings are kept for 31 days before being deleted. Footage can be archived if it is being used by the Police in relation to a specific case, however, when the issue has been to court or the footage is no longer needed it is deleted.

The Code details that access to retained images and information should be restricted and that there must be clearly defined rules on who can gain access and for what purpose such access is granted. The disclosure of images or information should only take place when it is necessary for such a purpose or for law enforcement purposes. The Council's internal CCTV Code of Practice details how and when images and information can be released to the Police or Senior Management from the Council. In addition, exceptionally, authorised bodies, such as insurance companies, can be provided with images/information.

Future plans

Council officers are in the process of contracting a company to add a further seven cameras to the system to bring the overall total to 102. At the Council's Budget setting meeting in February 2014, funding was approved for the additional cameras and it was agreed that there should be two each in Tarleton, Scarisbrick and DownHolland with one in Buscough.

In order to decide on the final locations the Parish Councils and Ward Members were asked to provide suggestions of specific locations. In principle, the Police had given us their support to these locations if they may assist in relation to cross border crime. At the time of writing this report, not all suggestions had been received and as a result no further details can be provided on the detailed locations. It is envisaged that, once the suggestions are received, a public consultation exercise will take place and this will be highlighted in the press and to neighbouring residents by letter. The final locations will then be agreed between the Portfolio Holder and the Assistant Director for Community Services.

If unsuitable locations are suggested, this point will be detailed, prior to them making any final decision.

Review and reporting

In accordance with the principles of the Code, The Council will review its CCTV system regularly, but at least annually.

Appendix 1: West Lancashire CCTV Camera - Review

March 2014

Camera Number	Location	Main impact/purpose of camera	Location appropriate
101	Park Pool	ASB and criminal damage	Y
102	Two Saints	ASB and theft	Y
103	Church Street	ASB	Y
104	Stiles Car Park	ASB and theft	Y
105	Burscough Street	ASB	Y
106	Clock Tower	ASB	Y
107	Aughton Street	ASB	Y
108	Hutton Way	ASB, theft and criminal damage	Y
109	Hants Lane - Car Park	ASB, theft and criminal damage	Y
110	Wheatsheaf - Car Park	ASB, theft and criminal damage	Y
111	Railway Road	ASB, theft and criminal damage	Y
112	Bus Station	ASB and theft	Y
113	Moorgate	ASB and night time economy	Y
114	Moor street	ASB and night time economy	Y

115	St. Helens Road	ASB and may assist in the recognition of vehicles involved in crime on major access route	Y
Camera Number	Location	Main impact/purpose of camera	Location appropriate
116	Railway Station/Car Park	Theft and criminal damage	Y
117	Railway Station platform	ASB and public safety	Y
118	County Road / Opposite Hayfield	ASB and may assist in the recognition of vehicles involved in crime on access route	Y
119	Scott Drive / Sefton Drive	ASB	Y
120	Scott Drive / Carroll Crescent	ASB	Y
121	Car Park, 52 Derby Street	Theft and asset protection	Y
122	Derby Street - Council Bldg.	Theft and asset protection	Y
123	Park Pool / Skateboard Park	ASB and criminal damage	Y
124	Mawdsley Terrace	ASB	Y
125	Park Avenue	ASB	Y
150	Derby Street - Door entry	Staff security and asset protection	Y
151	CCTV airlock	Staff security	Y
152	Derby Street - Customer Reception	Staff security and asset protection	Y
153	Derby Street - Customer Reception	Staff security and asset protection	Y
154	Derby Street - Entrance / Foyer	Staff security and asset protection	Y
155	Derby Street - Top of stairs to Planning	Staff security and asset protection	Y
156	Derby Street - Corridor/ Civic Reception	Staff security and asset protection	Y
157	Derby Street - Interview Rooms	Staff security and asset protection	Y

201	Ashurst - Health Centre	ASB	Y
202	Ashurst -Community Centre	ASB	Y
203	Ashurst- College	ASB	Y
Camera Number	Location	Main impact/purpose of camera	Location appropriate
204	Library - Rear of Concourse	ASB	Y
205	Library Opp. Police Station.	ASB	Y
206	Hall / Dingle Rd, Up Holland		Y
207	Sandy Lane	ASB	Y
208	Tanhouse - Egerton Shops	ASB	Y
209	Birch - Opposite School	ASB	Y
210	Birch Green - Skateboard Park	ASB	Y
211	Digmoor - Play Area - Banksbarn	ASB	Y
212	Digmoor - Shop & Church -	ASB	Y
213	Digmoor - Underpass Beechtrees	ASB	Y
214	Digmoor - Underpass	ASB	Y
215	Robert Hodge Centre	Theft	Y
216	Robert Hodge Centre	Theft	Y
217	Robert Hodge Centre	Theft	Y
301	Mill Lane Car Park	ASB	Y
302	Hyltons Carpets	ASB	Y
303	Burscough - Bridge Pub	ASB	Y
304	Burscough - Beaufort & Guys	Theft	Y

305	Burscough Fencing	Theft	Y
306	Burscough - Tollgate Crescent	Theft	Y
307	Burscough - Ringtail Place & Garage.	Theft	Y
Camera Number	Location	Main impact/purpose of camera	Location appropriate
308	Burscough - Langley Road	Theft	Y
309	Burscough - Baybutts	Theft	Y
310	Burscough -Firwood Timber	Theft	Y
311	Burscough - Hills Motors	Theft	Y
312	Burscough - Bachy	Theft	Y
313	Parbold	ASB	Y
401	Aughton Shops / Moss Delph	ASB	Y
402	Aughton / Town Green	ASB	Y
403	Aughton / Spa Shop	ASB	Y
	PHASE 2		
	Marks Square, Tarleton	ASB and criminal damage	Y
	Church Road, Tarleton	ASB and may assist in the recognition of vehicles involved in crime on access route to village centre	Y
	Station Road, Hesketh Bank,	ASB and theft	Y
	Station Road, Hesketh Bank,	may assist in the recognition of vehicles involved in crime on access route	Y

	Hoole Lane, Banks	ASB	Y
	Hoole Lane/Church Lane, Banks	may assist in the recognition of vehicles involved in crime on access route	Y
	Richmond Park, Burscough	ASB and criminal damage	Y
	Junction of St Helens Road and Small Lane, Ormskirk	ASB and may assist in the recognition of vehicles involved in crime on major access route	Y
Camera Number	Location	Main impact/purpose of camera	Location appropriate
	Outside/opposite 86 St Helens Road, Ormskirk	ASB and may assist in the recognition of vehicles involved in crime on major access route	Y
	St Helens Road, Ormskirk near University entrance.	ASB and may assist in the recognition of vehicles involved in crime on major access route	Y
	Junction of A59 and Long Lane, Aughton	may assist in the recognition of vehicles involved in crime on major access route	Y
	6 x cameras for Sandy Lane Shopping area, Skelmersdale	ASB and criminal damage and theft	Y
	4 cameras for Digmaor Parade shopping area	ASB and criminal damage and theft	Y
	Junction of Southport Road and Bescar Brow opposite to pub car park	may assist in the recognition of vehicles involved in crime on major access route	Y
	Halsall Road (opposite junction with Summerswood Lane, Halsall)	May assist in the recognition of vehicles involved in crime on major access route	Y
	Liverpool Road, Rufford, outside Hesketh Arms pub/Holmeswood Road	May assist in the recognition of vehicles involved in crime on major access route	Y
	Near to Ormskirk Church on junction of Derby St And Park Road	may assist in the recognition of vehicles involved in crime on major access route	Y

	Moorgate, Ormskirk, at junction of Moorgate and Bridge St	ASB	Y
	On RBS ("Nat West") building, Moor St Ormskirk	ASB and night time economy	Y
	Aughton St. A59, Ormskirk. On island at junction of County Road, Aughton St, A59	may assist in the recognition of pedestrians/vehicles involved in crime on major access route	Y
	Aughton - Junction of Town Green Lane and Prescott Road	may assist in the recognition of vehicles involved in crime on major access route	Y
Camera Number	Location	Main impact/purpose of camera	Location appropriate
	PHASE 3		
	Tarleton		
	Tarleton		
	Scarisbrick		
	Scarisbrick		
	DownHolland		
	DownHolland		
	Burscough		

Appendix 2

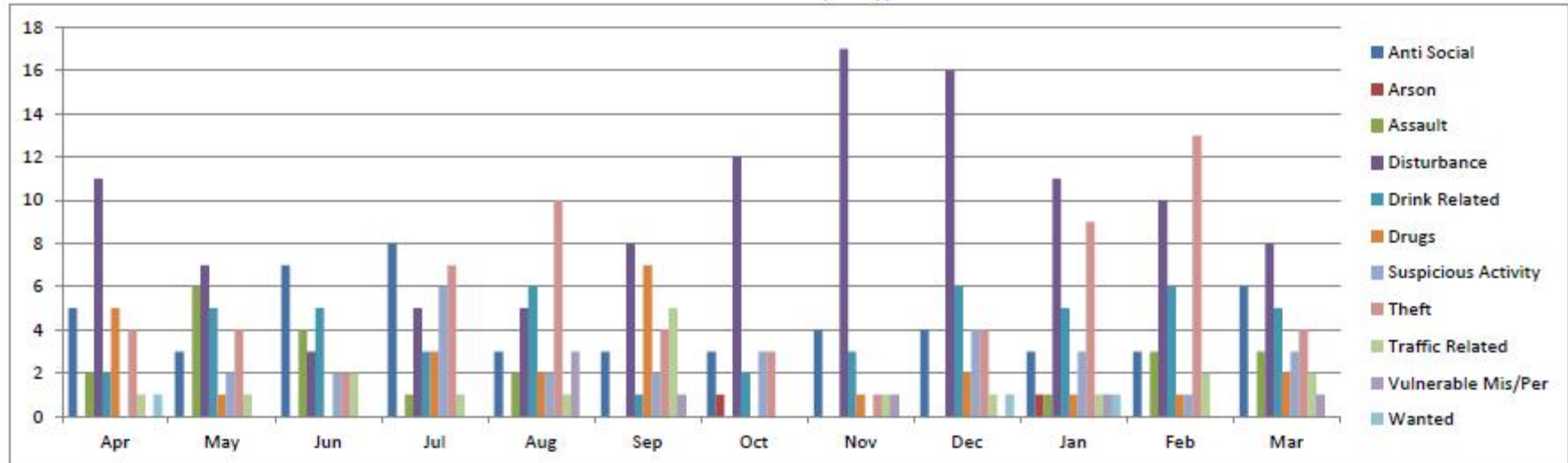


Incident Report for
West Lancashire Public Space CCTV

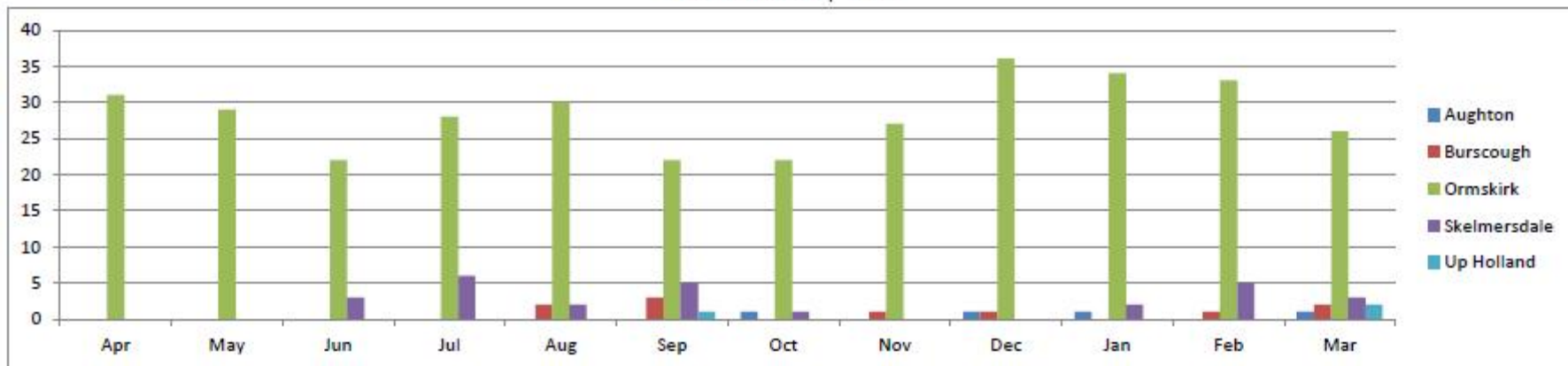
Covering the Period of
April 2013 – March 2014

All Sites

Incident Count per Type



Incident Count per Site



All Sites

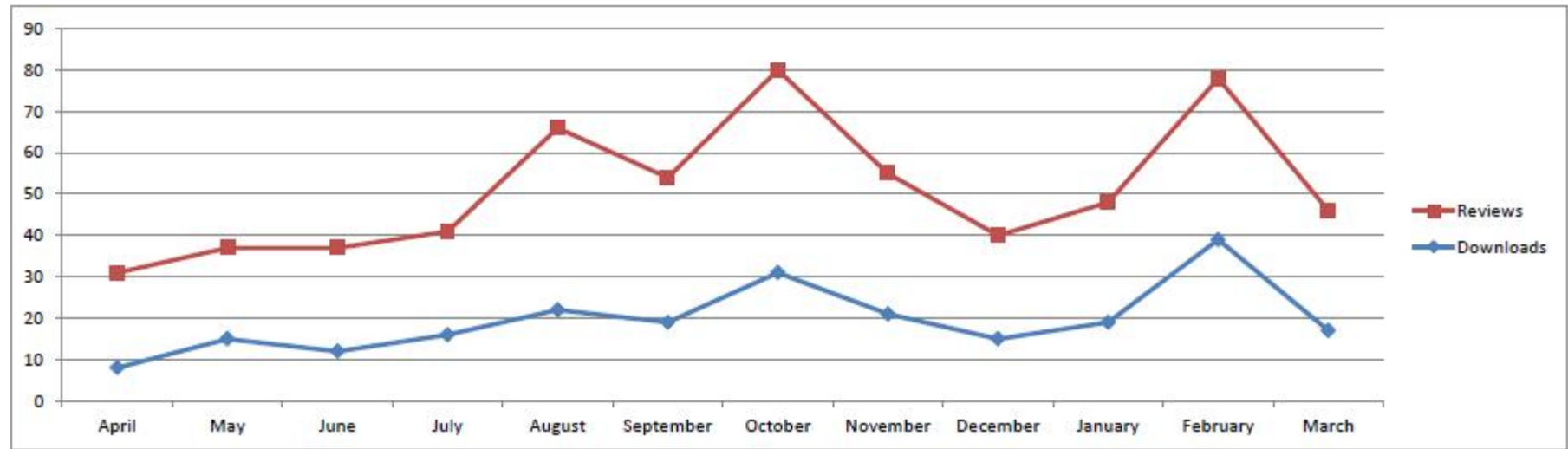
Nature of Incident	April	May	June	July	August	September	October	November	December	January	February	March	Total
Anti-Social	5	3	7	8	3	3	3	4	4	3	3	6	52
Arson	0	0	0	0	0	0	1	0	0	1	0	0	2
Assault	2	6	4	1	2	0	0	0	0	1	3	3	22
Disturbance	11	7	3	5	5	8	12	17	16	11	10	8	113
Drink Related	2	5	5	3	6	1	2	3	6	5	6	5	49
Drugs	5	1	0	3	2	7	0	1	2	1	1	2	25
Suspicious Activity	0	2	2	6	2	2	3	0	4	3	1	3	28
Theft	4	4	2	7	10	4	3	1	4	9	13	4	65
Traffic Related	1	1	2	1	1	5	0	1	1	1	2	2	18
Vulnerable/ Missing Persons	0	0	0	0	3	1	0	1	0	1	0	1	7
Wanted	1	0	0	0	0	0	0	0	1	1	0	0	3
Total	31	29	25	34	34	31	24	28	38	37	39	34	384

Month	Monday	Tuesday	Wednesday	Thursday	Friday	Saturday	Sunday	Total
April	4	4	5	2	10	3	3	31
May	5	0	3	2	5	7	7	29
June	4	4	1	2	4	3	7	25
July	2	5	1	8	5	10	3	34
August	1	4	6	7	5	6	5	34
September	4	2	0	6	3	6	10	31
October	1	1	8	3	3	3	5	24
November	0	2	0	1	3	17	5	28
December	3	3	5	2	7	8	10	38
January	2	6	6	8	5	4	6	37
February	5	8	4	2	5	6	9	39
March	3	1	3	3	3	7	14	34
Total	34	40	42	46	58	80	84	384

All Sites

During this period, 379 reviews were carried out, resulting in 234 incidents being downloaded to disc to be used for evidential purposes.

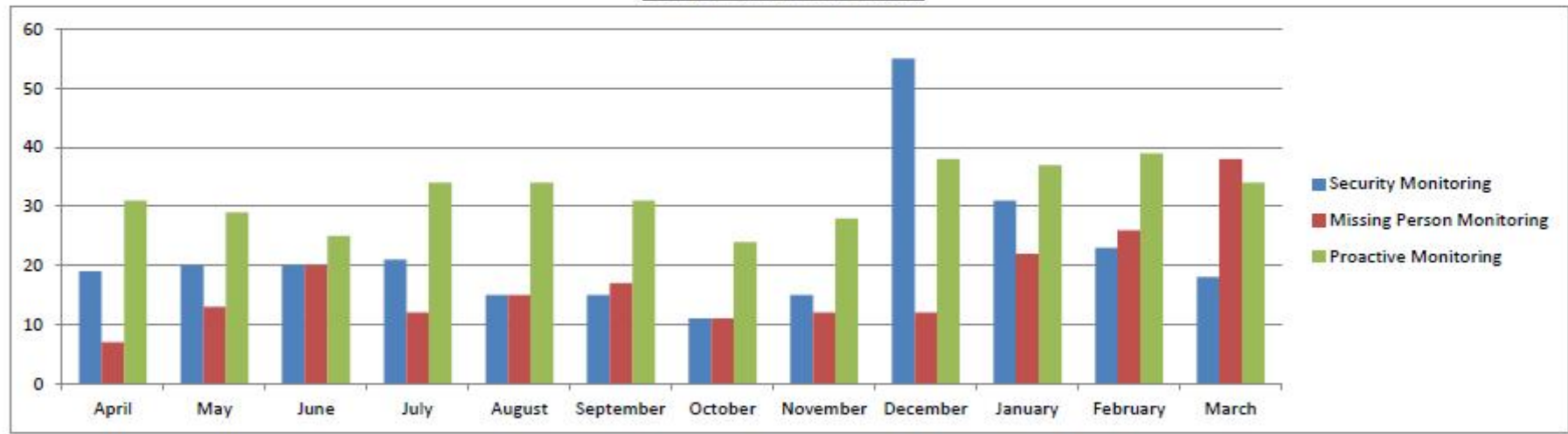
	April	May	June	July	August	September	October	November	December	January	February	March	Total
Review	23	22	25	25	44	35	49	34	25	29	39	29	379
Discs	8	15	12	16	22	19	31	21	15	19	39	17	234
Total	31	37	37	41	66	54	80	55	40	48	78	46	



All Sites

	April	May	June	July	August	September	October	November	December	January	February	March	Total
Security Monitoring	19	20	20	21	15	15	11	15	55	31	23	18	263
Missing /Person Monitoring	7	13	20	12	15	17	11	12	12	22	26	38	205
Total	26	33	40	33	30	32	22	27	67	53	49	56	

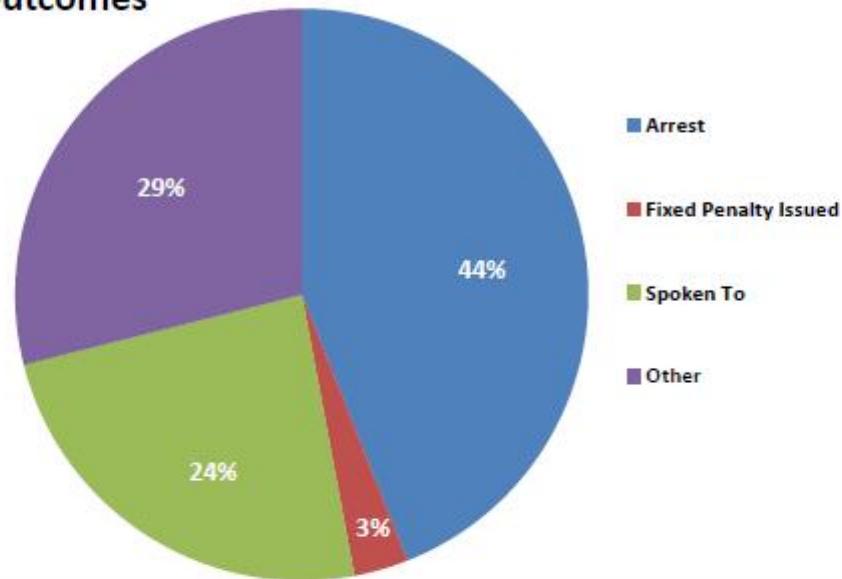
Extra Monitoring Duties



As well as the incidents recorded in the log (demonstrated on this graph as Proactive monitoring), Operators are often asked to perform many other tasks. The most common are that of monitoring security vehicles, which are considered to be a potential high risk target, and also missing persons. The Missing Persons heading covers everything from missing children to vulnerable persons. CCTV is an ideal tool in this type of work as it provides a good overview of the streets and can cover great areas in a short space of time. This is demonstrated by the extra 468 incidents that are recorded as monitoring duties.

All Sites

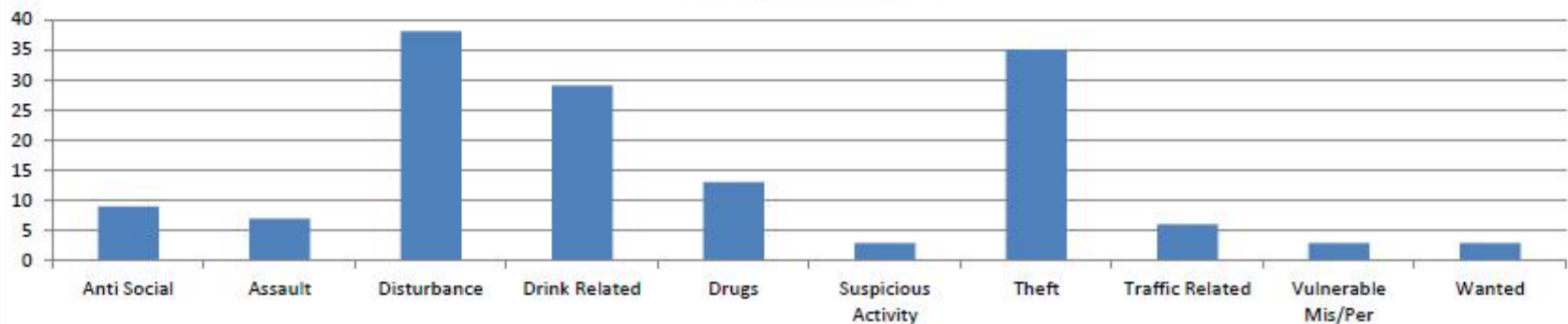
Outcomes



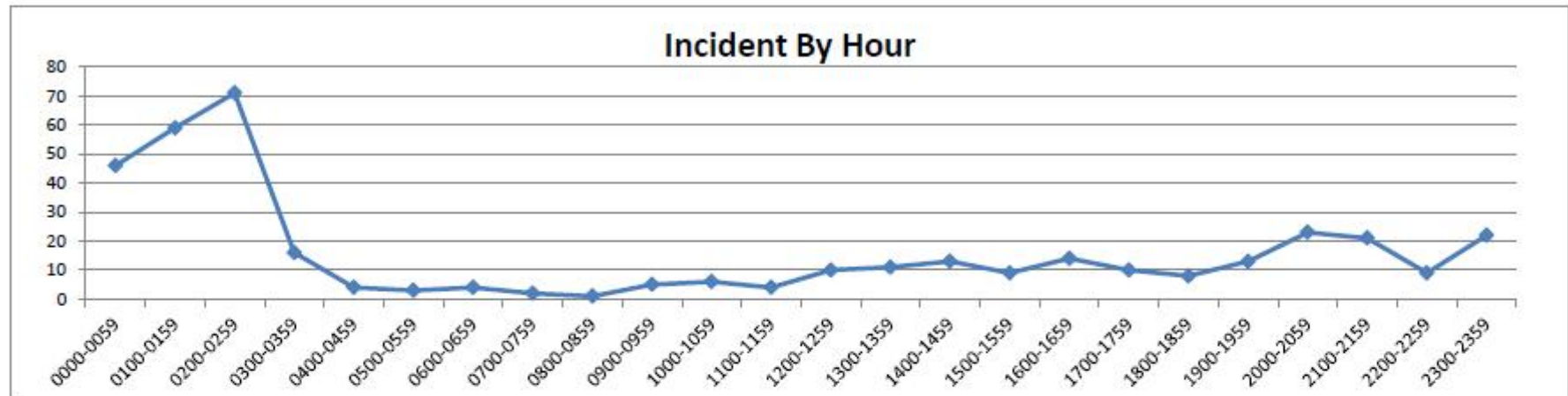
During the period, April 2013 to March 2014, there were 384 incidents recorded in the incident log:

- 146 ended in a police "Arrest" of which 187 people were detained
- 13 ended in "Fixed Penalties" being issued
- 123 amounted in "Other" outcomes (including details noted, all in order, etc.)
- 102 incidents fell into the "Spoken To" category. This category covers incidents where CCTV has identified an issue where getting the Police or the PCSOs to intervene, at an early stage, prevents trouble from escalating to something which could become a potentially more serious situation
- The chart below shows arrest by incident type, with **Disturbance** calls accounting for 26% of arrests resulting in the detention of 48 people

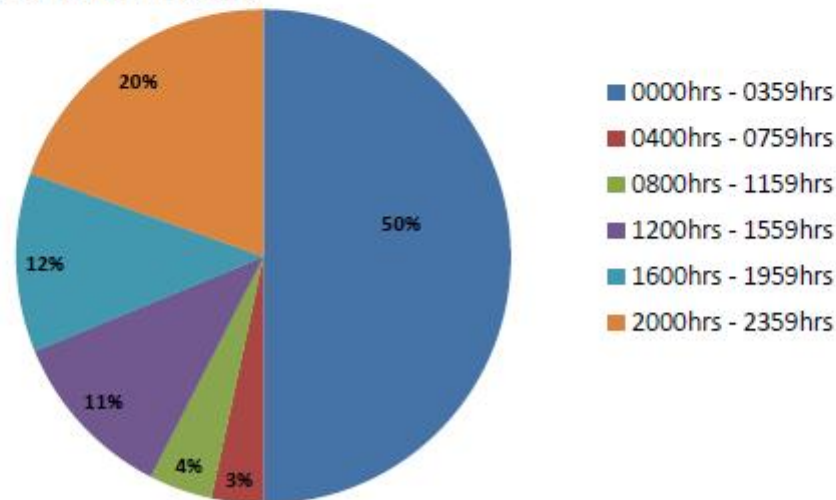
Arrest by Incident Type



All Sites



Incident By 4 hour Period



The above graph and the chart to the left show the number of incidents by hour of the day.

The busiest period by far is between 0000hrs – 0359hrs with 192 incidents in total occurring during this period.

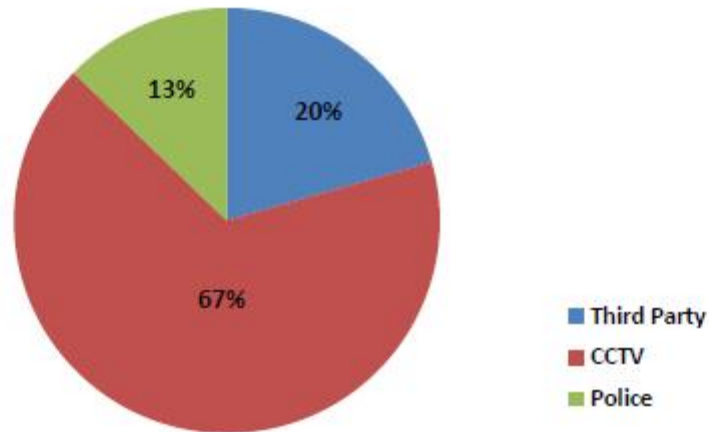
The following are the two main types of incident encountered by the CCTV staff on duty during this period:

- Disturbance – 84
- Drink Related – 36

It should be noted that although the drink related category is less than half of that of the disturbance category, it would be anticipated that a substantial number of disturbances will have alcohol as a major contributing factor.

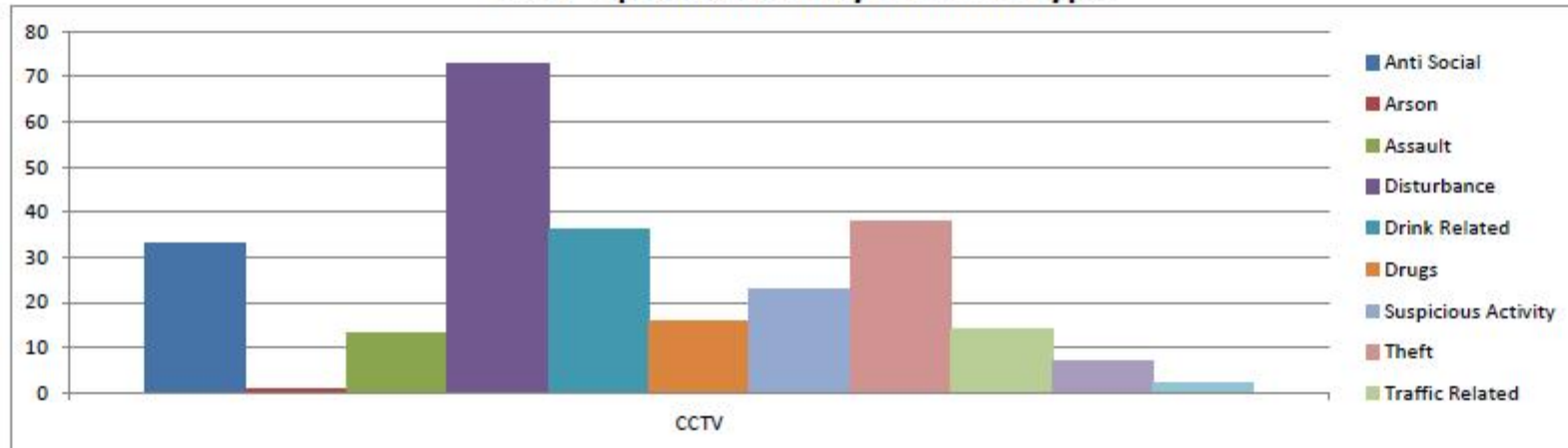
All Sites

How Made Known



- The chart to the left shows how the incidents came to the attention of the CCTV Operators. The three headings are:
 - Third Party – Radio or telephone call from shops/licensed premises or in some cases directly from members of the Public.
 - Police – Radio or telephone call directly from Police Officer or the Police Control Room.
 - CCTV – This heading is where the incident was identified directly by the duty CCTV operator.
- With 67% (256), being identified directly by CCTV, this shows that the system is being used proactively to try and identify trouble and direct resources to the issue before it escalates.
- The graph below shows the breakdown of incidents that were captured by the duty CCTV Operator.

CCTV Operator Call by Incident Type



Ormskirk

Nature of Incident	April	May	June	July	August	September	October	November	December	January	February	March	Total
Anti-Social	5	3	7	6	2	2	3	4	4	3	3	5	47
Arson	0	0	0	0	0	0	0	0	0	1	0	0	1
Assault	2	6	2	1	2	0	0	0	0	1	2	3	19
Disturbance	11	7	3	3	4	6	12	17	15	11	9	8	106
Drink Related	2	5	5	3	6	1	1	3	6	5	6	4	47
Drugs	5	1	0	2	2	5	0	1	2	1	1	2	22
Suspicious Activity	0	2	2	5	1	0	3	0	4	2	1	1	21
Theft	4	4	2	7	10	4	3	1	3	7	10	3	58
Traffic Related	1	1	1	1	1	3	0	1	1	1	1	0	12
Vulnerable/Missing Persons	0	0	0	0	2	1	0	0	0	1	0	0	4
Wanted	1	0	0	0	0	0	0	0	1	1	0	0	3
Total	31	29	22	28	30	22	22	27	36	34	33	26	340

Month	Monday	Tuesday	Wednesday	Thursday	Friday	Saturday	Sunday	Total
April	4	4	5	2	10	3	3	31
May	5	0	3	2	5	7	7	29
June	4	3	1	1	4	2	7	22
July	2	1	1	7	4	10	3	28
August	1	3	5	7	4	6	4	30
September	2	1	0	4	2	4	9	22
October	1	1	6	3	3	3	5	22
November	0	2	0	1	3	16	5	27
December	3	3	5	2	7	7	9	36
January	2	5	5	7	5	4	6	34
February	4	5	4	2	4	5	9	33
March	3	0	2	3	2	4	12	26
Total	31	28	37	41	53	71	79	340

Other Locations (Aughton, Burscough, Skelmersdale & Up Holland)

Nature of Incident	April	May	June	July	August	September	October	November	December	January	February	March	Total
Anti-Social	0	0	0	0	0	1	0	0	0	0	0	1	2
Arson	0	0	0	0	0	0	1	0	0	0	0	0	1
Assault	0	0	2	0	0	0	0	0	0	0	1	0	3
Disturbance	0	0	0	2	1	2	0	0	1	0	1	0	7
Drink Related	0	0	0	0	0	0	1	0	0	0	0	1	2
Drugs	0	0	0	0	0	2	0	0	0	0	0	0	2
Suspicious Activity	0	0	0	1	1	2	0	0	0	1	0	2	7
Theft	0	0	0	0	0	0	0	0	1	2	3	1	7
Traffic Related	0	0	1	0	0	2	0	0	0	0	1	2	6
Vulnerable/Missing Persons	0	0	0	0	1	0	0	1	0	0	0	1	3
Wanted	0	0	0	0	0	0	0	0	0	0	0	0	0
Total	0	0	3	6	4	9	2	1	2	3	6	8	44

Month	Monday	Tuesday	Wednesday	Thursday	Friday	Saturday	Sunday	Total
April	0	0	0	0	0	0	0	0
May	0	0	0	0	0	0	0	0
June	0	1	0	1	0	1	0	3
July	0	4	0	1	1	0	0	6
August	0	1	1	0	1	0	1	4
September	2	1	0	2	1	2	1	9
October	0	0	2	0	0	0	0	2
November	0	0	0	0	0	1	0	1
December	0	0	0	0	0	1	1	2
January	0	1	1	1	0	0	0	3
February	1	3	0	0	1	1	0	6
March	0	1	1	0	1	3	2	8
Total	3	12	5	5	5	9	5	44